

Cătălin Dumitru Dorcioman
Eva-Edith Dorcioman



CAIET GRAFISME

Editura [®]



Antrenează creierul

Braşov, 2024

Cătălin Dumitru Dorcioman
Eva-Edith Dorcioman

CAIET GRAFISME

Braşov, 2024

Editura
[®]
Autorenează creierul

Descrierea CIP a Bibliotecii Naționale a României

Magia Înmulțirii : caiet de lucru pentru clasa a II-a / Cătălin Dumitru

Dorcioman, Eva-Edith Dorcioman

Brașov : Numlit, 2023

ISBN 978-630-6604-01-2

I. Dorcioman, Cătălin Dumitru

II. Dorcioman, Eva-Edith

37

Reproducerea parțială sau integrală
a materialelor NumLit este strict interzisă.

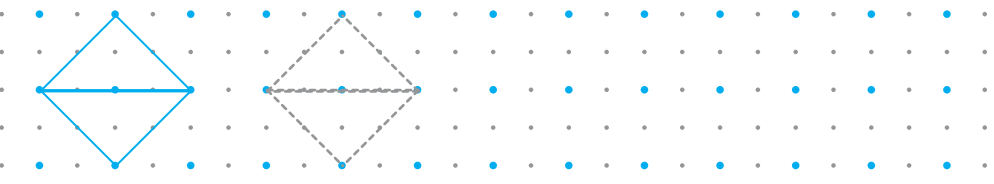
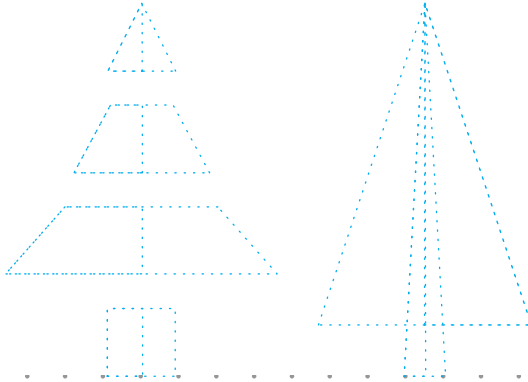
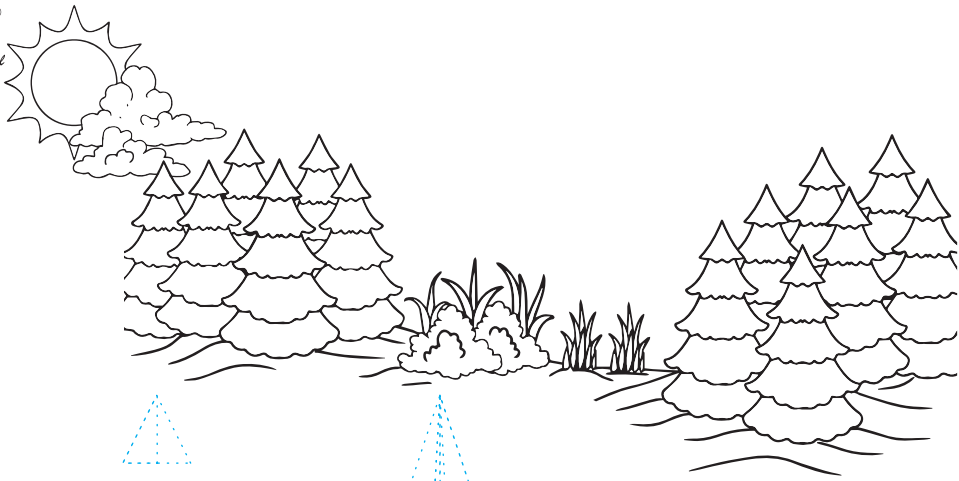
Produs în România

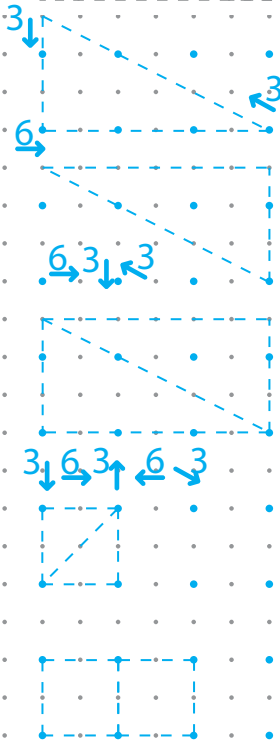
Editura
[®]
Autreneață creierul

 + 0721 10 10 20

 office@printings.ro

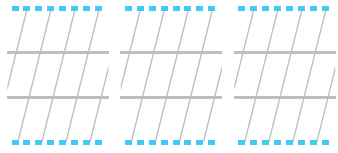
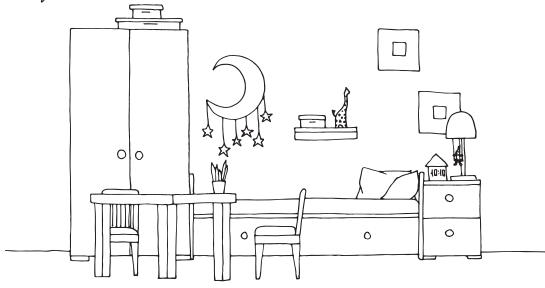
 www.numlit.eu





____ / ____ / ____
ZIUA LUNA ANUL

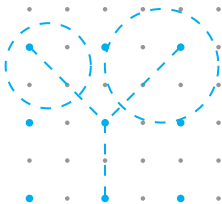
□ □ □ □ □ □ □ □ □ □ □ □
Lu Ma Mi J Vi



Conturează, desenează, colorează!

A vertical column on the left contains five smiley faces with different expressions: happy, neutral, sad, angry, and very sad. To the right is a large grid of dots. The letters 'A', 'H', 'E', and 'U' are formed by dashed lines on the grid, with arrows indicating the direction of the strokes. The rest of the grid is empty for practice.

A large area for drawing and coloring. It features a grid of slanted lines. A vertical blue line is drawn on the left side. The letters 'A', 'H', 'E', and 'U' are drawn with solid blue lines, corresponding to the dashed letters in the grid above. The rest of the area is blank for drawing.





GRF

ISBN

Produs în România

A5⁶⁸
Pag



prietenos cu mediul



ISO 536	: 80 ± 3.0
ISO 534	: 103 ± 4
ISO 8791	: 225 ± 75
ISO 2471	: min 92.0

ISO 287	: 6.2 ± 0.7
ISO 2470	: 103.5 ± 1.5
ISO 11475	: 145 ± 3.0
Min 75% cel, min 13% glue/white	



© Reproducerea parțială sau totală a materialelor NumLit este strict interzisă.



Antrenează creierul



www.numlit.eu